



Canon
imageRUNNER®
ADVANCE C5000
series

Power to perform.
People to succeed.



Canon
CANON GROUP

Intelligent
multifunctional
colour printer for the
office

- Keep control of every last detail
- Effectively free up time for business-critical tasks
- Integrate colour seamlessly into your workflow
- Enjoy convenience across the board
- Promote sustainability without sacrificing performance

Power to perform. People to succeed.

Sandra,
Océ customer
helpdesk



Sander,
Océ service
engineer



Kevin,
Océ software
consultant



Ida,
Océ account
manager



Canon imageRUNNER ADVANCE C5000 series

Intelligent multifunctional colour printer for the office



"What makes the imageRUNNER ADVANCE C5000 series truly intelligent is the way in which it supports your existing document workflows out-of-the-box. And when you need a specific tailor made solution, it is my job to build a perfectly fitting print and document environment"

Kevin, Document and workflow consultant

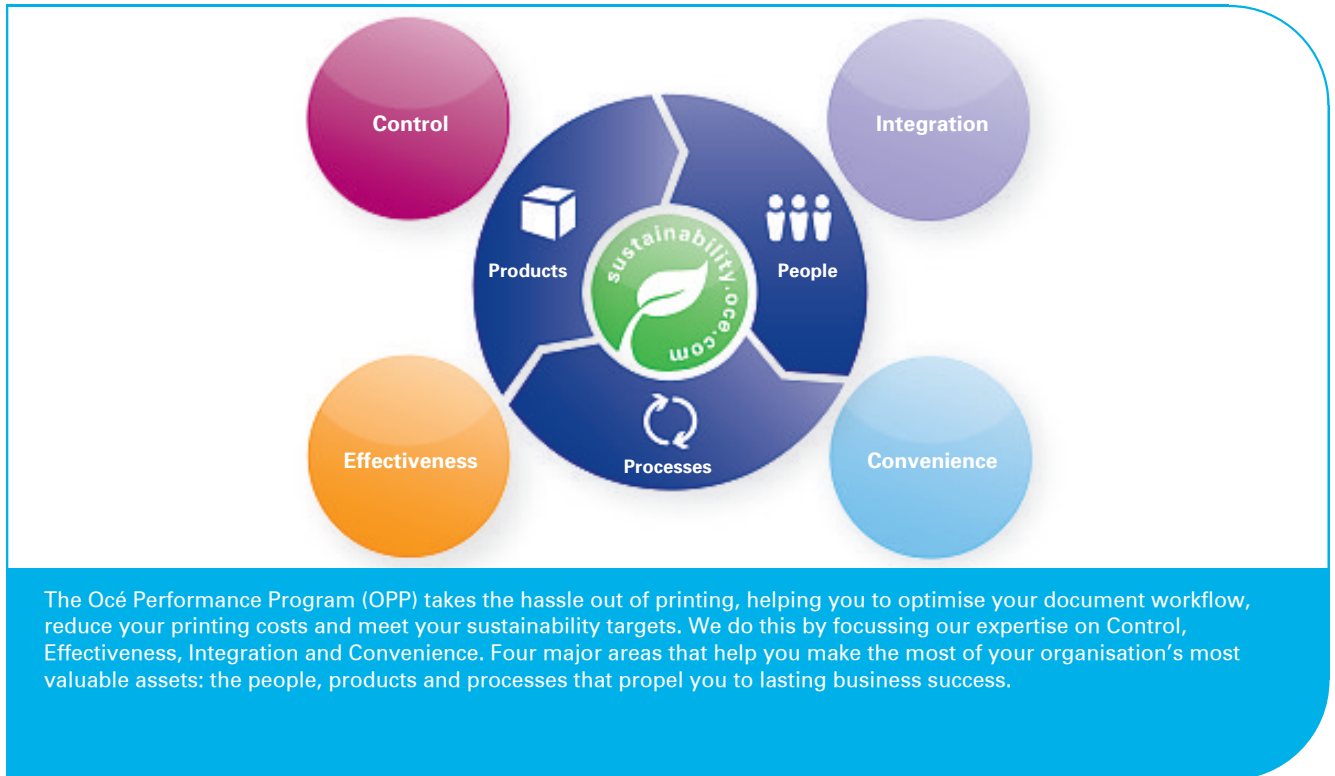
A Canon office multifunctional gives you the power to perform. Bringing big, bold, high-impact colour right into your office. Stir in the Océ expert knowledge force and you also gain the people to succeed. Document specialists who understand your needs. And add personality to your printers. So that your colour printing systems integrate seamlessly into your total knowledge-management infrastructure.

Océ and Canon

In 2010, Océ joined the Canon family to create the global leader in the printing industry. This compelling combination combines a 130-year heritage of Océ customer-driven innovation with the vast technical and financial resources of Canon. The result? Unmatched scale in research and development, manufacturing and distribution, together with accelerated development of new innovations and the industry's broadest choice of hardware, software and workflow solutions.

Produce high-impact colour no matter your document format

The Canon imageRUNNER ADVANCE C5000 series allows you to scan, print, copy and fax in glorious colour. And adds a professional touch with a variety of finishing modules. Available at production speeds of 30/35/45/51 A4 pages per minute and scanning at up to 100 images per minute.



Keep control of every last detail

Button down control of your network, document settings and security. Be able to monitor your costs. Easy because the imageRUNNER ADVANCE C5000 series manages the details that are most important to your business. Use sophisticated colour where it adds value. Eliminate costly outsourcing, network control and take advantage of proactive problem solving across your fleet, adhering to company-definable document standards and login procedures, data encryption, and tamper resistant hardware. Plus tracking for charge back, and reduced paper costs via automatic duplexing, scan-to-email, scan-to-pc and i-faxing.

Effectively free up time for business-critical tasks

Ineffective document production can rob you of precious time. Time you could better use developing profitable business innovations. The imageRUNNER ADVANCE C5000 series makes information access and reproduction a snap. The Advanced Space, meanwhile, allows your employees to effectively share documents digitally, such as via email, fax, FTP, Microsoft SharePoint™ and Canon iW360 software.

Integrate colour seamlessly into your workflow

Choose and configure the imageRUNNER ADVANCE C5000 series to fit your precise workflow needs. For example, choose the speed and finishing modules that compliment the way you're currently working. And up- or down-grade the system as requirements change. You can also adapt settings to minimize costs and confusion simply by authorizing employees according to their individual document and device needs.

Canon imageRUNNER ADVANCE C5000 series

Intelligent multifunctional colour printer for the office

Enjoy convenience across the board

From document creation through document management, archiving to output, the imageRUNNER ADVANCE C5000 series makes things easier at each stage of the communication lifecycle. With convenient functionality for end users:

- Single button automation for complicated- or routine tasks
- Bold, intuitive colour touchscreen
- Remote user interface
- Scanning to email, fax, PC or USB
- Support for follow-me printing
- Advanced Space for easy digital file sharing

Add software to the equation and things become easy. Whether you run a small company or you are operating in a large multinational organisation, the system comes with software tools that reduce IT workload and support remote and centralised device management for single device environments and large scale printer fleet environments and everything in between.

UniFLOW facilitates secure printing, follow-me-printing, scan workflows and rules based routing, authentication and management of user accounts.

With iW Management Console you monitor your device fleet, without complicating things.

By using the onboard MEAP technology in the ADVANCE platform a smooth integration of software through the user interface of the device is accomplished.

Promote sustainability without sacrificing performance

Canon innovation is good news for the environment. Improvements in development, procurement, use and recycling procedures have reduced CO₂ emissions dramatically.

The imageRUNNER ADVANCE C5000 series contains a number of components made of recycled plastics. The system also features newly developed bioplastics, which break down more quickly and completely, meaning less stress on the environment. And the devices are lower in energy consumption than many in their class. With an incredibly low power usage in sleep mode of less than 1.5 W this is bound to have an impact on your electricity bill.

Finished output



Electronic output



Electronic input



USB-stick



Fax



PC / Mac



Digital document

Options to support your office document workflow

The Canon imageRUNNER ADVANCE C5000 series fully supports your document production and distribution needs. With a comprehensive range of 8 models, ranging in print speed from 30 to 51 ppm in black & white and full colour, combined with professional finishing options and options to support your workflow, you will surely find the right match for your office. The model range can be divided in 4 basic and 4 i-models, the latter group offering additional PDL (Page Description Language) support in a value package for high-end networked offices.



Main hardware options:

- Document feeder: standard or high speed
- Paper input unit with 2 trays or pedestal
- High capacity tray
- Tab and envelope feeding kits
- Copy tray
- Inner finisher
- Extra output tray for Inner finisher
- Staple finisher
- Booklet maker
- Punch unit
- Removable hard disk
- Additional hard disk (for Hard disk mirroring only)
- Fax kit
- Memory card and stick reader
- Canon card reader
- Internal imagePASS controller
- External colorPASS controller (only iR-ADV C5051)

1 Document feeder
The 100- to 150-sheet capacity (model dependant) document feeder supports scanning from 46 to 100 originals per minute in colour and black & white.

2 Workflow integration
Intelligent support of file sharing and document reproduction, respecting the existing document workflow, taking into consideration current and future security requirements.

3 Operator panel
The large intuitive colour touchscreen is easy to use and provides full control over your print job at the tip of your finger.

4 Controller
Standard 1.2 GHz controller with 2.5 GB RAM and 80 GB hard disk (upgrade to 250 GB). For advanced colour management and workflow control choose between the imagePass and the colorPASS (only C5051).

5 Paper input
The standard paper trays and Bypass tray provide 1200-sheet capacity. The maximum input capacity is 5000 sheets.

6 Flexible finishing
Choice of finishing: compact 500-sheet Inner finisher with multi-position stapling; 3000-sheet Staple or Booklet finisher with folding, multi position stapling and optional hole punching.

Canon imageRUNNER ADVANCE C5000 series

Intelligent multifunctional colour printer for the office

General		Copying	
Description	Full-colour laser printer/copier/scanner and fax (optional)	Copy speed	A4 simplex, 600 dpi: 51 / 70 ipm (One-pass document feeder)
Imaging technology	Electrophotographic laser; pQ toner	Copy resolution	600 x 600 dpi
Speed (A4 / A3)	iR-ADV C5051(i): 51 / 26 ppm iR-ADV C5045(i): 45 / 26 ppm iR-ADV C5035(i): 35 / 18 ppm iR-ADV C5030(i): 30 / 18 ppm	Zoom	25 - 400% (0.1% increments)
Warm-up time	38 seconds	Features	Cover insertion, Proof copying, Watermark, Stamping, Copy protection, Job interrupt, Job build, Photo mode, Poster mode, OHP interleaving, Job programmes
First copy time	Black & white: 4/4/5.5/5.5 seconds Colour: 6.5/6.5/8.9/8.9 seconds	Printing	
Original size	A5 - A3 (Document feeder)	Job management	Mailbox, Advanced Space
Duplex mode	1:2, 2:1, 2:2	Print resolution	1200 x 1200 dpi
Dimensions standard unit (WxDxH)	620 x 735 x 938 mm	Colour gradation	256
Weight standard unit	153 kg	File format	PCL, PostScript, JPEG, TIFF, XPS, PDF, PDF/A-1b, Compact PDF/XPS
Power requirement	220 - 240 V; 50 / 60 Hz, 10 A	Features	Direct printing (TIFF/JPEG/EPS; Option: PDF/XPS), Watermark, Mixmedia, Cover printing, Booklet printing, Header and footer printing
Power consumption	Maximum 1.8 KW (45 / 51 ppm) Maximum 1.3 KW (30 / 35 ppm)	Scanning	
Certificates	Blue Angel, EPA Energy Star®, RoHS, Common Criteria EAL3	Scan speed	A4 simplex, 300 dpi: 70 ipm (One-pass document feeder) A4 duplex, 300 dpi: 100 ipm (One-pass document feeder)
Paper handling		Resolution	100 dpi, 150 dpi, 200 x 100 dpi, 200 dpi, 200 x 400 dpi, 300 dpi, 400 dpi, 600 dpi
Maximum paper capacity	5000 sheets	Destination	Scan-to-Email, Scan-to-iFax, Scan-to-PC (SMB, FTP), Scan-to-WebDAV
Paper trays	2 x 550 sheets (80 gsm)	File format	TIFF, JPEG, PDF, XPS, High compression PDF/XPS, PDF/A-1b
Bypass tray	100 sheets (80 gsm); A5-R - A3, Envelopes; Custom sizes: 99 x 140 mm - 330 x 457 mm	Option: Outline PDF (Trace & Smooth), Searchable PDF/XPS, Reader Extensions PDF, Office Open XML, Encrypted PDF, Device Signature PDF/XPS	
Document feeder	150 originals (One-pass document feeder): A5-R - A3; 42 - 128 gsm	Features	LDAP support, Multi-method send, TWAIN scanning, Digital signature (user and device)
Paper size	A3, A4, A4-R, A5-R, Envelopes; Custom sizes: 139.7 x 182 mm - 304.8 x 457.2 mm	Faxing	
Paper weight	52 - 209 gsm; Bypass tray: 52 - 256 gsm	Modem	Super G3 33.6 Kbps
Output capacity	250 sheets; Maximum: 3000 sheets	Transmission method	Analogue faxing, i-Fax, Colour i-Fax, IP-fax, Remote fax
Finishing	Option: Offset stacking, Grouping, Sorting, Stapling, Corner stapling, Two-point stapling, Saddle stitching, Booklet folding, Hole punching (2 / 4 holes)	Resolution	400 x 400 dpi
Controller		Number of destinations	256 (Single and groups)
Processor	Canon Custom processor, 1.2 GHz	Features	Job forwarding, Different-size originals, Frame erase, Job build, Delayed send, Job done notice, Two-sized original mode, Book to two page mode, 50 confidential (fax) mailboxes, Remote fax
Memory / Hard disk	2.5 GB / 80 GB	Workflow	
Interface	Ethernet 1000Base-T / 100Base-TX / 10Base-T, Wireless LAN, USB 2.0	MEAP	Yes
Protocols	TCP/IP (LPD / Port 9100, WSD, IPP, IPPs, SMB, FTP), IPX/SPX (NDS, Bindery), IPv6, AppleTalk	Options	
Operating system	PCL: Windows 2000®, Windows XP®, Windows Server 2003 / 2008®, Windows Vista®, Windows 7 PostScript 3®; Windows 2000®, Windows XP®, Windows Server 2003 / 2008®, Windows Vista®, Windows 7, Mac OS X® 10.4.9 or later UFRII: Windows 2000®, Windows XP®, Windows Server 2003 / 2008®, Windows Vista 32/64®, Windows 7, Mac OS X® 10.4.9 or later Mac-PPD: Mac OS 9.1 or later, OS X® 10.2.8 or later	Description	For a full list of device options, software options and colour controllers, please ask your Océ representative or go to www.oce.com .
Page Description Language	UFRII, PCL 5c/6, PostScript 3		
Security	Secure hard disk erase, Hard disk data encryption and mirroring, Scan lock, IPSec, Secure printing, Department ID, User authentication, Removable hard disk, PDF encryption, Digital signature, Secure watermark		

Beyond the Ordinary



**Printing for
Professionals**

Professionals everywhere look to Océ for digital printing and document management. In the office, Océ systems keep the information of business and government moving. In manufacturing, architecture, engineering and construction, Océ wide format printers set the standard while our display graphics systems help people produce banners, billboards and other large, colourful applications. In corporate printrooms, marketing service bureaus and the graphic arts industry, Océ systems print transaction documents, mailings, newspapers, manuals and books on demand at the highest speeds. And Océ Business Services manage the complete document workflow of customers around the world. It all helps you go "Beyond the Ordinary" in printing and document management.

© 2010 Océ. Illustrations and specifications do not necessarily apply to products and services offered in each local market. Technical specifications are subject to change without prior notice. All other trademarks are the property of their respective owners.

For information and services, visit us at:

www.oce.com